

UNDERSTANDING

Secondary Asbestos Exposure

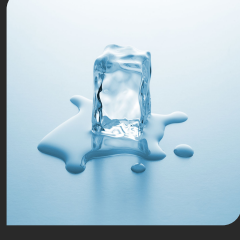
WHAT IS ASBESTOS AND WHY IS IT DANGEROUS?

Asbestos is a mineral, a rock that comes from the ground. Asbestos was used in thousands of products, buildings and vehicles because of its durability.

The word asbestos means indestructible. The ancient Greeks gave asbestos its name, because it does not easily:



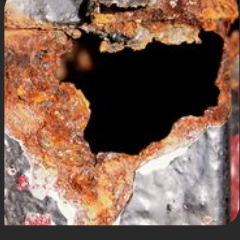
Burn



Melt



Dissolve



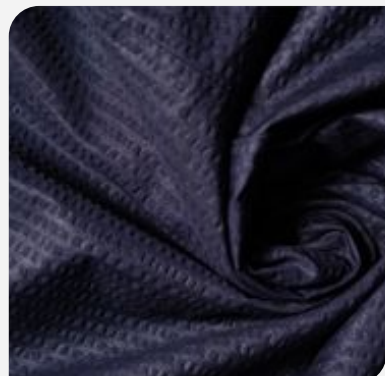
Corrode/Rust



Evaporate

Asbestos also resists **electricity** and **sound**, and is used as an **insulator**.

ASBESTOS CAN BE EASILY CRUMBLLED INTO FIBERS. ASBESTOS FIBERS CAN BE...



woven in a fireproof fabric



sprayed on walls or products



mixed with other materials

...making them more resistant to **heat**, **sound**, **electricity** and **corrosion**.

HISTORIC ASBESTOS FACT

The European Emperor Charlemagne was said to have had an asbestos tablecloth. After a meal, he'd impress his guests by throwing it into the fire. When it was removed, it would be glistening and clean.

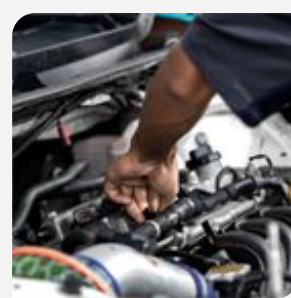


But asbestos fibers can become embedded in your lungs, stomach or other parts of your body. Asbestos fibers are **durable**, and over time they **cause damage** and scarring that leads to **asbestos-related illnesses**, including **cancer**.

Studies show there is **no safe level** of asbestos exposure, and people have developed asbestos-related illnesses **40, 50** or in some cases even **70** years after they were first exposed. ^{1 2}

WHAT EXACTLY IS "SECONDARY ASBESTOS EXPOSURE"?

Because of its remarkable qualities, asbestos was used in many industrial environments, like factories, mills, shipyards, refineries, mechanics shops and construction of all kinds.



People who worked in these industrial environments are at a greater risk of developing asbestos-related illnesses like asbestosis, pleural damage, mesothelioma and other cancers.

BUT THEIR SPOUSES AND OTHER HOUSEHOLD MEMBERS ARE ALSO AT RISK OF SECONDARY ASBESTOS EXPOSURE.

Asbestos is very dusty. It sticks to clothing, skin, tools, shoes.



Many industrial workers with asbestos fibers on their work clothes and tools carried it into their vehicles and homes.

Spouses and others in the vehicle or household were exposed. Anyone who cleaned asbestos-tainted clothes is at the greatest risk.



Asbestos fibers are microscopic. They also have no taste or smell. You don't always know you're breathing them.

IN STUDIES OF ASBESTOS DISEASE, 1 IN 5 CASES OF ASBESTOS DEATHS WERE CAUSED BY SECONDARY OR "TAKE-HOME" ASBESTOS EXPOSURE. ³

If you believe you have been exposed to asbestos in the past, or if you have symptoms of an asbestos-related illness, contact a healthcare professional.

Treating asbestos-related illnesses can involve expensive hospital bills and medications, as well as lost wages and limitations in your lifestyle. But compensation is available for spouses, household members and others with illnesses affected by their secondary exposure to asbestos. Speak to an experienced asbestos attorney to understand your options.

¹Agency for Toxic Substances and Disease Registry, [PUBLIC HEALTH STATEMENT ASBESTOS](#) (CAS#: 1332-21-4)

²Pierce, J.S., McKinley, M.A., Paustenbach, D.J. and Finley, B.L., 2008. [An evaluation of reported no-effect chrysotile asbestos exposures for lung cancer and mesothelioma](#). Critical Reviews in toxicology, 38(3), pp.191-214.

³Lanphear, B.P. and Buncher, C.R., 1992. Latent period for malignant mesothelioma of occupational origin. JOM, 34(7), pp.718-721.

⁴Arachi, D., Furuya, S., David, A., Mangwiro, A., Chimed-Ochir, O., Lee, K., Tighe, P., Takala, J., Driscoll, T. and Takahashi, K., 2021. Development of the "National Asbestos Pro le" to Eliminate Asbestos-Related Diseases in 195 Countries. International Journal of Environmental Research and Public Health, 18(4), p.1804.

⁵Lanphear, B.P. and Buncher, C.R., 1992. Latent period for malignant mesothelioma of occupational origin. JOM, 34(7), pp.718-721.

⁶Kelly, B., 2017. [Take-Home Toxin: Following Kesner's Lead and Creating a Consistent Framework for Determining Duty toward Victims of Secondary Asbestos Exposure](#). Md. L. Rev., 77, p.1166. In 1972, the Occupational Safety and Health Administration (OSHA) set up regulations on asbestos to protect workers and their families from being injured by asbestos. Many state and federal courts have said that these regulations are also to protect spouses and others exposed by coming into contact with the workers. Spouses have recovered money for injuries caused by their secondary asbestos exposure.

To learn more, [click here](#) →